



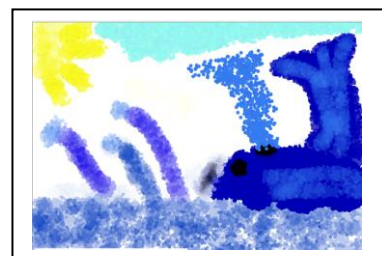
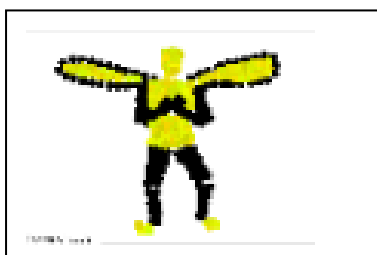
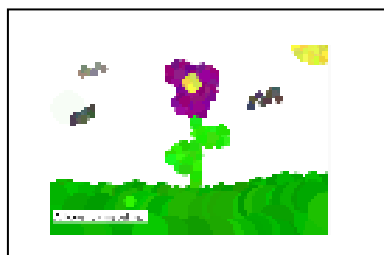
What Has Happened This Term?

For a short term it has been another busy one. It got off to a fabulous start by celebrating World Book Day, which the children loved- especially when they had the opportunity to work out who all the Masked Readers were! A massive thank you for all of us for all the videos which were sent in, without your help that activity would not have been possible.



One of the favourite subjects this term has been Design and Technology where children have developed their building techniques in order to design and make their stable structures. At the time of writing this we have a large collection of boxes and resources ready for the children to finish making their models- they are very excited.

Children have also learnt about different art styles in Computing and used the different styles to create their own digital pictures. There are lots of photos of the finished work which can be located in the Year 1/2 section on our school website.



Year 2 have thought carefully about 2D and 3D shapes, naming the properties such as the number of vertices, faces and edges, more recently they have developed their knowledge of fractions, finding fractions of shapes, numbers and amounts. It would be great if they could continue revisiting fractions over half term using the activities set up on Purple Mash and My Maths just to secure this knowledge further.

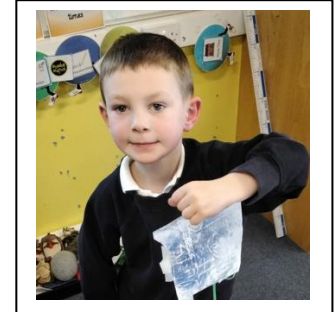
Year 1 have been comparing different heights, lengths and weights in Maths- well done everyone.

The children are really looking forward to sharing their Easter bonnets and we are all looking forward to seeing them parade these on Friday 31st March.



Here are the latest group of children who have reached the pot of gold at the end of the rainbow! Well done everyone!

Keep reading and getting your sponsors for the Readathon too- closing date is Friday 21st April.



We have lots more photos on our Year 1/2 section on the school website.

Curriculum- What will the children be learning this term?



Year 2: Position and direction. Problem solving and efficient methods. Time

Year 1: Multiplication and division. Halves and quarters. Position and direction.



English (T4W)- 'The Black Hat' (Literacy Shed visual literacy) Finding Tale Settings toolkit

Science- Super Scientists



Computing- Online safety, building on previous learning including the visit from Tracey Good.

History- Comparing life under the reins of Elizabeth 1 and Elizabeth 11



Art and Design- Sculpture and 3D: Clay We will be exploring printing and using tools to create a tile out of clay.



PE- Indoor: Dance- Explorers

Outdoor- Ball Skills: Rackets, Bats and Balls

Earrings **MUST** be removed for safety reasons. If children come to school with them already removed this is even more helpful to your child. Tape is quite painful to remove.

Religion & Worldviews- 1.4 DAS What can be learnt from sacred books? (Christian, and Muslim)



Power and Identity- Learning to cooperate with each other. Building confidence to try new things. Sharing our hopes, dreams and knowing the difference between reality and fantasy.



PSHE- Relationships See our school website for further information regarding what will be covered in these lessons.

Music- Friendship Song Genre: Pop, Soul, Film, Musicals

Club Information

AM sports clubs will be sent out directly to you.

Any clubs running after school will be sent out via parent pay.



NUT ALLERGIES

We have children in school who could have an anaphylactic reaction if exposed to peanuts, sesame, nuts or nut traces. Please only send your children to school with packed lunches that

Important Dates

21.4.23 Closing date for Readathon

26.4.23 Y1/2 trip to Wollaton Hall

Month of May: Y2 SATs

3.5.25 Coffee morning for parents of children with SEND

5.5.23 Coronation Special

8.5.23 School closed

do not contain nuts or products containing nut traces. This includes Nutella and other chocolate spreads/products that contain nut traces or MAY contain nut traces.

Thank you

9.5.23 Visitor in Y1/2 from Erewash Museum
25.5.23 -26.5.23– Year 2 Lea Green Residential

Week beginning 12.6.23 Y1 National Phonics
Screening Check

Communication

If you would like to speak to your child's class teacher please either email in to the department (see details at the bottom of this newsletter) or speak to them at the end of the school day.

If you are unsure about anything please do speak to your child's class teacher who will be happy to help.

Important Reminders

A few parents have asked how they can find out more about our Read-a-thon. Please go to www.scargill.derbyshire.sch.uk

– News- February – Readathon Letter February 2023.

Get reading! Enjoy together!

Trip to Wollaton Hall

Our first Year 1/2 trip will be to Wollaton Hall in Nottingham. We will be spending the day there and along with enjoying the grounds of the hall, we will be completing an activity titled 'Tree Trail' which will be led by a member of team at Wollaton Hall. Further information about the trip, including the cost, will be sent directly to you via parent pay.

Erewash Museum Visitor

We are pleased to say that as part of our history topic this term we will be joined by a member of the team from Erewash Museum. The expert will focus their workshops on the historical enquiry question; Who was Queen Elizabeth I? Information about the cost of this will be sent to you via parent pay.

Year 2 Residential to Lea Green

Year 2 are really excited about the residential to Lea Green which will take place this half-term. We will be talking to the children more about this nearer the time, and will soon be asking them the all important question – who would you like to share a room with?! If you have any questions about the visit, please do speak to a member of the team, or email into the department. Keep a watchful eye on twitter- if your child does not have permission to have their photo on twitter, but you would like them to whilst on the residential, please do let us know. All photos will be placed on the school website, once the residential has been completed.

KS1 (SATs)

As stated in the important dates section, throughout the month of May Y2 will be undertaking their Special Agent Training! (SATs). These are a national requirement that form part of the information teachers will use for the end of KS1 assessment data. We carry out our 'special agent training' (we prefer not to refer to them as tests as this can cause some anxiety) assignments in a fun and relaxed way and the children see them as a chance to show off what they can do. To help, please

keep talk of 'SATs' to a minimum and ensure your child is well rested, fed and watered as usual and attend school every day throughout May.



Happy Easter!



Have a wonderful break and try not to eat too many eggs😊

There are some Easter activities set up on Purple Mash if your child would like to logon during the holiday.