

Adding -Ed, -Er and -Est to a Word Ending in -Y with a Consonant Before It



Sort these words into adjectives and verbs

[Click here for answers!](#)

cry

try

dry

funny

happy

copy

heavy

reply

adjectives

verbs

What do they all have in common?

cry

try

dry

funny

happy

copy

heavy

reply



- Look at the last letter...
- They all end in a '-y'.
- Look at the letter before the y...
- They all have a consonant before the '-y'
- What do we call these letters?

How has the verb **try** changed in this sentence?

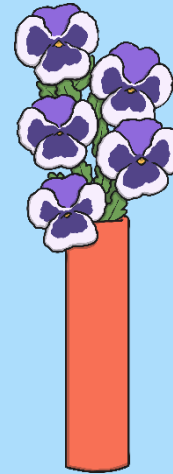
Matthew **tried** very hard to learn his spellings at the weekend.



How is the word spelt now?

How has the verb **reply** changed in this sentence?

"Who smashed Grandma's best vase?" asked mum last night, but nobody **replied**.



Is it still a verb?

To add '**-ed**' to a word that ends in '-y' with a consonant before it...

reply > repli + ed replied

RSVP

MON

Last Collection Time
Monday to Friday
5.30pm
Saturday
11.15am

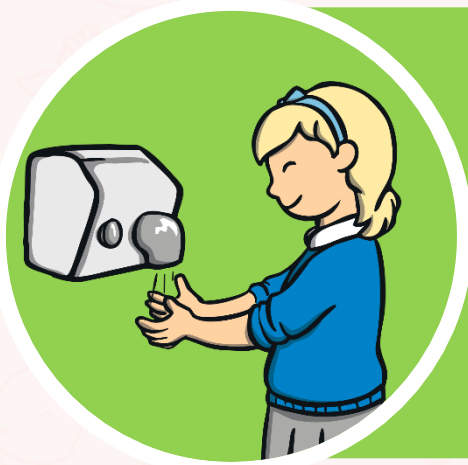
Practice

Answer

Can you follow this rule and change these words?



cried



dried

How has the verb **copy** changed in this sentence?

“Please go to the photocopier and get 6 worksheets,” Miss Foley said.



How is the word spelt now?

How has the adjective **happy** changed in this sentence?

The old man had never looked **happier**.



Is it still a verb?
Is it still an adjective?

To add **'-er'** to a word that ends in **'-y'** with a
consonant before it...

The diagram illustrates the process of adding the suffix '-er' to the word 'happy'. It features a sequence of elements: a blue box with the word 'happy', a white circle containing a greater-than sign '>', a pink box with 'happi', a white circle with a plus sign '+', a large black cursive '-er' being pointed to by two hands, a white circle with an equals sign '=', and a green box with the word 'happier'. Below the diagram, two cartoon girls are shown; the one on the left points to the '>' symbol, and the one on the right points to the '-er' suffix. In the bottom right corner, there are two buttons: a purple 'Practice' button with a hand icon and a green 'Answer' button with a checkmark icon.

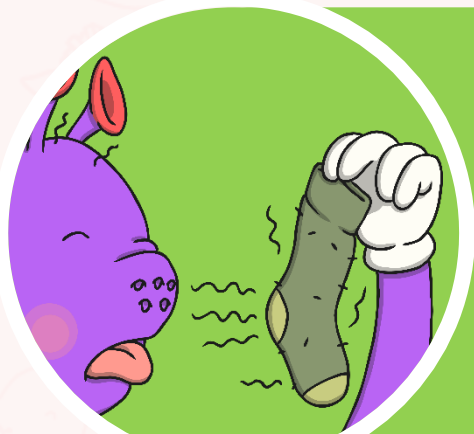
happy > happi + er = happier

Practice Answer

Can you follow this rule and change these words?

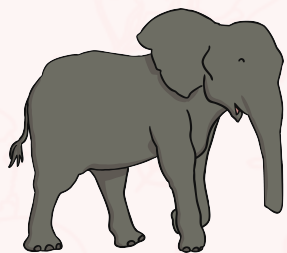


funnier



smellier

Using what we have found out about adding '**ed**' and '**er**' to a word ending in '**-y**' with a consonant before it, can you complete these sentences? Write them on your whiteboard.



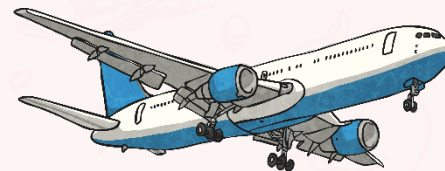
An elephant is

heavier



A lorry is

heavy



An aeroplane is

heaviest

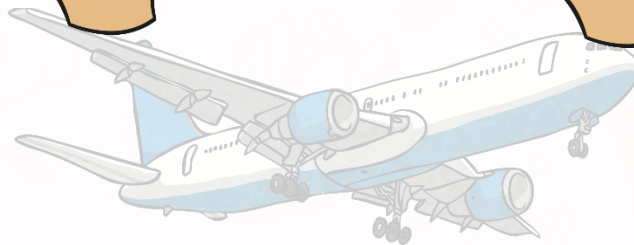
heav ... ?

heavier

heavy

To add '**-est**' to a word that ends in '-y' with a
consonant before it...

heavy > heavier > heaviest



Practice



Answer

Here are this week's spellings to practise.

copier	replied
copied	tried
happier	dried
happiest	driest
cried	funnier

Work hard to learn them and the rules we have looked at today.



